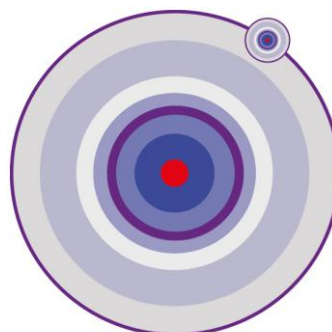


PROJECT COORDINATION

6 month project meeting @Barcelona

Alba B. Rosado
Music Technology Group (UPF)

12th April, 2012



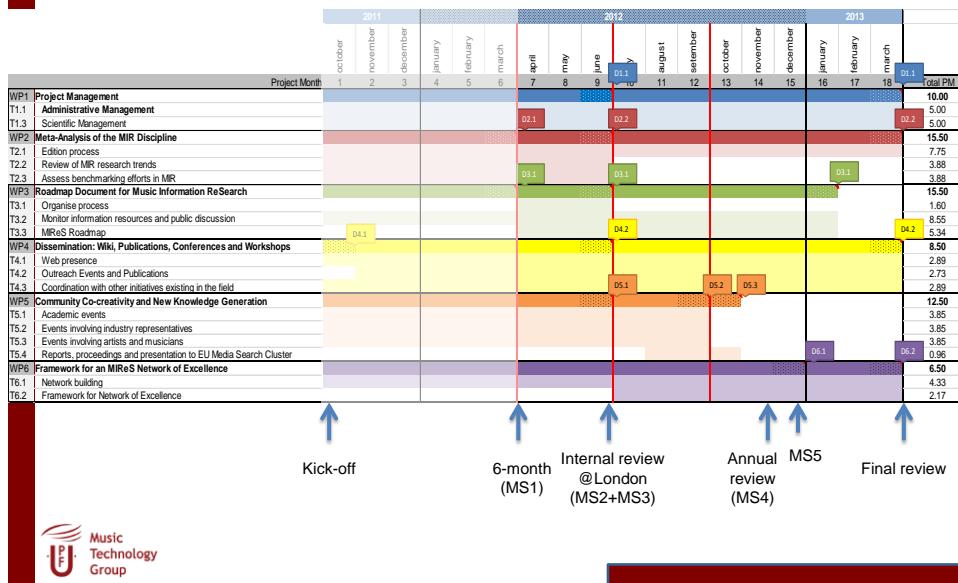
MIReS

Documentation Hub

- Available at [MIReS wiki pages](#)
- Structure:
 - Official docs
 - Project documents
 - Guidance docs and other useful resources
- To be periodically updated

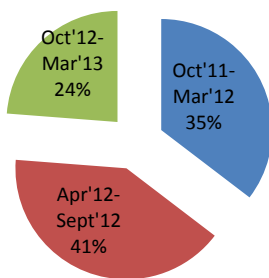


Project execution

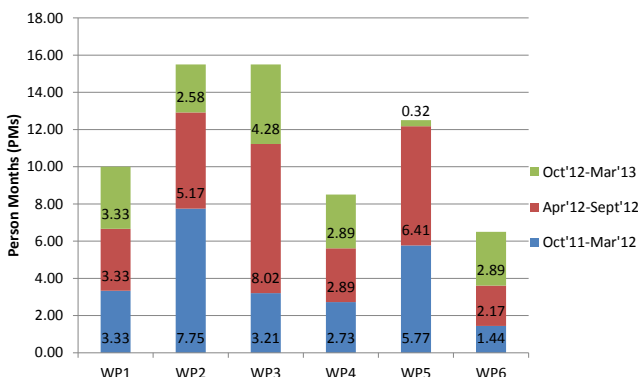


MGT – Total effort (Plan)

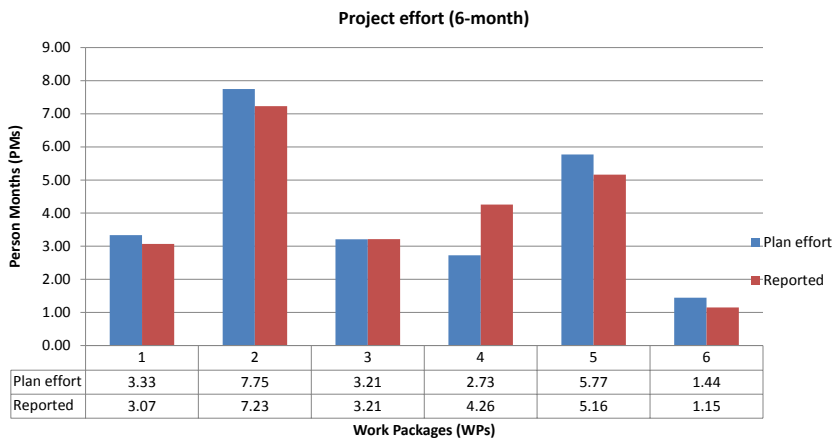
% Execution



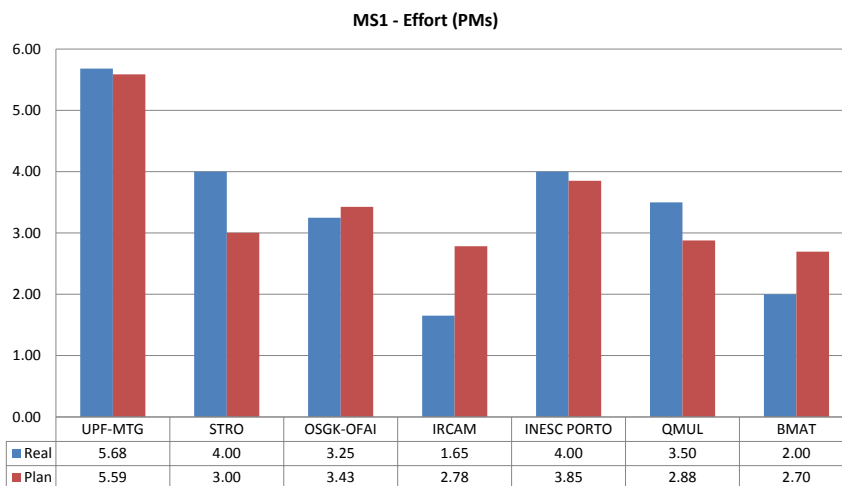
Project effort



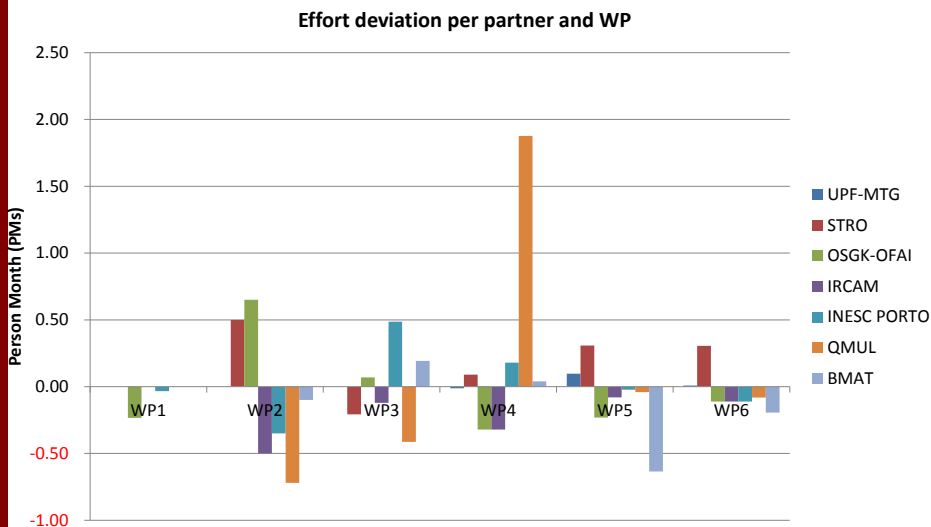
MGT – Effort MS1



MGT – Effort MS1



MGT – Effort MS1



MGT – Financials

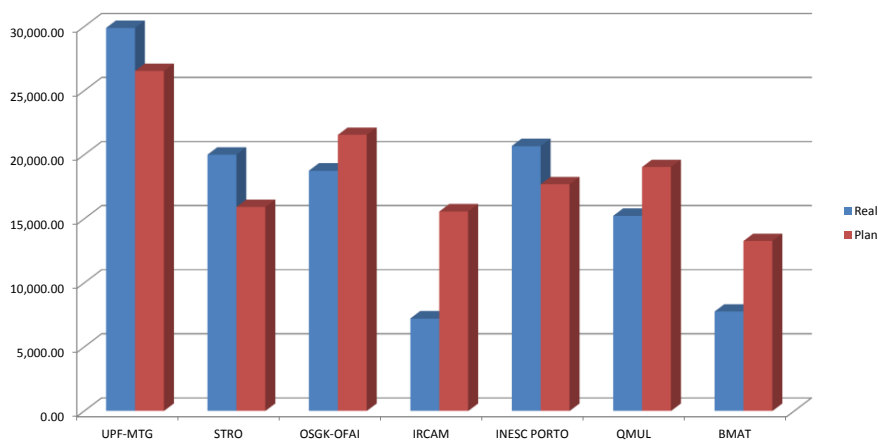
Estimated eligible costs (whole duration of the project)						
Part. number	Part. short name	Coordination / Support (A)	Management (B)	Other (C)	Total A+B+C	EC contribution
1	UPF-MTG	74,169.00	42,500.00	0.00	116,669.00	104,030.00
2	STRO	71,856.00	30,531.00	0.00	102,387.00	91,295.00
3	OSGK-OFAI	87,972.00	9,264.00	0.00	97,236.00	86,701.00
4	IRCAM	77,067.00	0.00	0.00	77,067.00	68,713.00
5	INESC PORTO	80,773.00	8,977.00	0.00	89,750.00	80,021.00
6	QMUL	90,462.00	0.00	0.00	90,462.00	80,661.00
7	BMAT	69,061.00	0.00	0.00	69,061.00	61,579.00
TOTAL		551,360.00	91,272.00	0.00	642,632.00	573,000.00

MGT – Financials – MS1

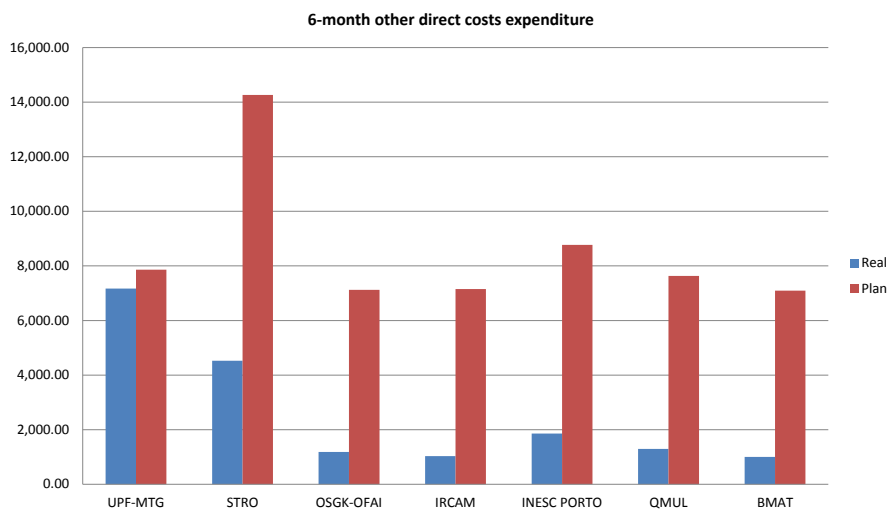
	Total budget	Actual costs (Plan MS1)	Actual costs (Real)	%Deviation
Total PMs	68.50	24.23	24.08	0.60
Personnel	366.205,00	129.536,71	119.497,06	7.75
Other costs	169.314,00	59.890,98	18.060,47	69.84
Indirect costs	107.113,00	37.885,54	27.511,51	27.38
Total costs	642.632,00	227.312,23	165.069,04	27.38
Max EC funding	573.000,00	202.682,41	146.626,95	27.66

MGT – Financials – MS1

6-month personnel costs expenditure



MGT – Financials – MS1



MGT – Internal review preparation

Common errors in 6-month reporting:

- S&T:
 - Unify approach in efforts estimated for WP2&3
 - Confusion with events included in WP4&5
- Financials
 - Indirect costs must be budgeted as 20% of Total direct costs, though max EC funding for this category of expenses is 7%
 - Funding rate for MIREs direct costs = 100% (for both MGT and Coord.)

MGT – Internal review preparation

Points to be addressed:

- Personnel
 - Increase effort reported in WP4 (OSGK-OFAI, IRCAM)
 - Justify deviations in D1.1
- Other direct costs
 - Plan 'Other direct costs' expenditure
 - Justification of deviation in D1.1 (M9)

Questions

